

# Attention! Please read!

Here you can find answers to many Frequently Asked Questions.

## Q. Why can I still hear sounds with the earplugs on?

Do not test sound block-out first 20+ minutes after inserting the earplugs.

A patented pressure-equalizing function is YES EAR's differentiated feature. This function dramatically reduces difference in air pressure between inside and outside the body. Sounds from inside the body such as breathing, swallowing, digesting or any moving sounds will be less heard with YES EAR on. You might hear more noises right after wearing comparing with earplugs from other companies, but noises will fade away in about 20 minutes.

### \*Please note:

Occupational Safety & Health Research Institute conducts the performance experiment on industrial hearing protectors. The experiment includes sound block-out test and the person wearing the earplugs is supposed to stay in the silent chamber for 1-2 hours before the test starts. Accurate test results cannot be guaranteed if sound block-out test is done with a test person not staying in the silent chamber for a period of time.

**You must be wearing the earplugs in a wrong way if there is no difference between before and after wearing them.**

Take a picture of each of your ears from the side and compare it with the images.  
(For NS4000, FI3000 or BA2500, compare with the upper picture on page 6.)

### \*Please note:

Might not fit on infants or ones with non-universal size of outer ears.

## Q. What's different from any other water-blocking earplugs?

Other water-blocking earplugs are usually shaped as a cylindrical stick with triple layered water-blocking cover. When swimming, the stick wobbles by water resistance and the water-blocking cover easily makes a gap which causes water flow into the ears.

Our ergonomic design, on the other hand, would fully cover your earhole without a tiny gap. In addition, our patented unique technology will help you listen clearly to the swim instructor without water penetrating into your ear canal.

## Q. How can I wash YES EAR?

After use, separate the barometric control cap from the earplug body. Then wash them with cleanser such as dishwashing detergent in running water. Make sure grease, dirt or earwax is all washed out. Dry thoroughly before use.

### \*Please note:

It is recommended to wash the earplugs after each use in swimming. Wash the earplugs regularly, and you will prevent inflammatory diseases. It'll also make the earplugs durable and help you not lose any components.

## Q. How to find the best fit?

You can choose a size of sealing ring that fits your earhole.

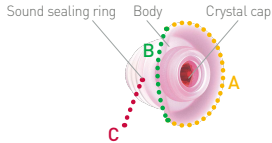
**“ YES EAR is patented product designed ”**  
ergonomically to fit the ear canal.

Most of other earplugs are designed focusing only on the function of high level of sound block-out without regard to the structure and function of human ears. They might cause pain, ringing, stuffiness or dull headache and decrease your concentration after wearing for hours in spite of complete sound block-out.

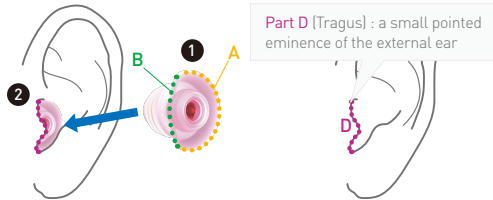
After several years of study, our research team found out it would be optimal for the auditory nerves and increase mental strength to block out high frequency sounds and allow low frequency to be heard. And we finally produced YES EAR based on the study results and even obtained a patent. Also, the superior performance of our earplugs were admitted by so many organizations, and now we supply our products to Republic of Korea air force (ROKAF), military units, major companies, power plants, KTX, etc. Even in Japan, YES EAR has a reputation and is sold at a high price among musicians and surfers.

- \* Visualize images in your head while reading the instructions, and it'll help you wear the earplugs properly.
- \* Do not test sound block-out first 20+ minutes after inserting the earplugs.

## Names of earplug components



## Insertion instruction (Left ear)

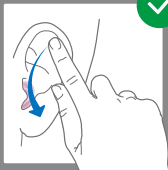


- ① Seen on the picture, hold the stem while part **A** is facing up and part **B** is facing down, and **insert it into your earhole** ② **Keep looking sideways and make sure the earplug is being inserted straight.** (If the earplug keeps being pushed out when you try to insert it, part **C** would have been stuck in the bend of ear canal not being inserted. Please make sure part **C** is inserted straight into your ear canal.)
2. Pull your ear up and back and let the earplug sit well inside your ear canal.

## Removal instruction

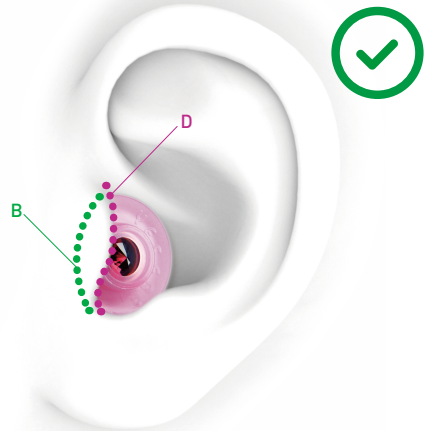
Using your thumb and forefinger, gently twist earplug while slowly pulling in an outward motion for removal.

**CAUTION:** Removing earplugs in a different way other than the instruction above may cause durability to decrease and components to be lost.



## Check after inserting the earplugs.

1. You must feel like being in a vacuum when the earplugs fit properly.
2. The earplugs must not easily fall out when you touch them with your finger.
3. Where part **B** is positioned must be same as the picture.
4. Part **B** must fit under the tragus [part **D**] and be hidden not to be seen.



If any of 1, 2, 3 and 4 is not satisfied, you are not properly wearing the earplugs. Please try again after reading the instruction thoroughly.

### \*Compare after inserting the earplugs.

Take a picture of each of your ears from the side and compare it with the <http://goo.gl/DiZudB> images.

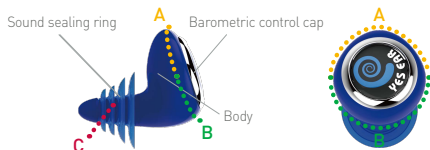
Crystal cap is the essential part for barometric control, water blocking and sound block-out. It is easily fall out when the earplug body is twisted. Please be careful not to lose it when using/keeping your earplugs.

## TI5000 Noise reduction performance

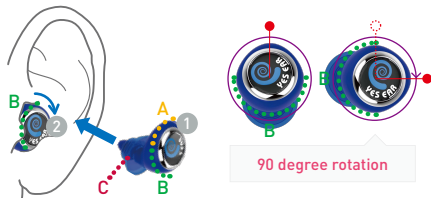
125Hz	250Hz	500Hz	1000Hz	2000Hz	4000Hz	8000Hz
10.6	15.9	16.2	21.8	26.0	28.2	29.9

- \* Visualize images in your head while reading the instructions, and it'll help you wear the earplugs properly.
- \* Do not test sound block-out first 20+ minutes after inserting the earplugs.

## Names of earplug components



## Insertion instruction (Left ear)



- As ① seen on the picture, hold the stem while part **B** is facing towards your ear, and **insert it into your earhole** ② **Keep looking sideways and make sure the earplug is being inserted straight.**
- When part **C** is inserted halfway through the ear canal, **slowly push inward while rotating the earplug up to 90 degrees (a quarter round) towards your backhead** (direction of the arrow).
- Pull your ear up and back and let the earplug sit well inside your ear canal. (If the earplug keeps being pushed out when you try to insert it, part **C** would have been stuck in the bend of ear canal not being inserted. Please make sure part **C** is inserted straight into your ear canal.)
- The maximum rotation is 90 degrees (a quarter round < See the picture) when the earplug is inserted halfway through the ear canal and pushed as being rotated. If it is rotated more than 90 degrees, the earplug cannot fit properly.

### \*Please note:

Be SLOW when you insert and remove the earplug! Rapid changes in atmospheric pressure cause pain in your eardrum.

## Check after inserting the earplugs.

- You must feel like being in a vacuum when the earplugs fit properly.
- The earplugs must not easily fall out when you touch them with your finger.
- Where part **B** is positioned must be same as the picture.



If any of 1, 2 and 3 is not satisfied, you are not properly wearing the earplugs. Please try again after reading the instruction thoroughly.

### \*Compare after inserting the earplugs.

Take a picture of each of your ears from the side and compare it with the <http://goo.gl/colBuW> images.

## NS4000 Noise reduction performance

125Hz	250Hz	500Hz	1000Hz	2000Hz	4000Hz	8000Hz
10.6	18.2	18.7	22.9	31.7	40.8	24.5